

隔离变压器

TT3 NEO

ISOLATING TRANSFORMERS

TT3 NEO

10 TO
630 kVA

LOW-LOSS
CORE
SHAPES

OPTIMIZED
COOLING

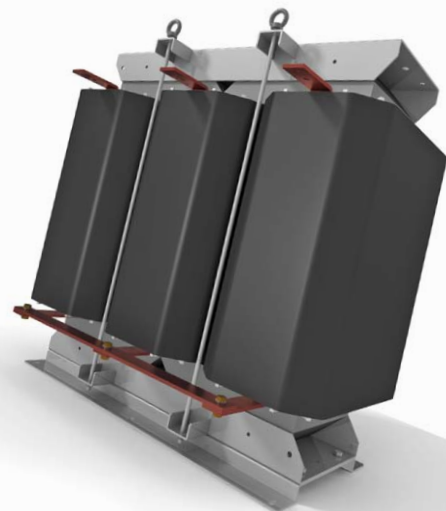


志存高远 变压器的下一个时代

THE NEXT GENERATION OF TRANSFORMERS

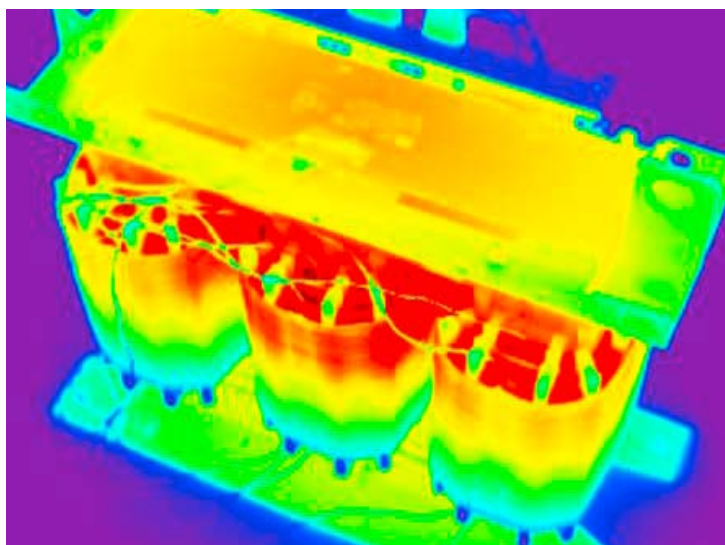
为了提供可靠的保护，理想的解决方案是使用线圈间带有电力隔离的隔离变压器。TT3 Neo 是新一代BLOCK TT3变压器，可在10 – 630 kVA的高功率范围内保证安全隔离。

For reliable protection, the ideal solution is to use isolating transformers with electrical isolation between the windings. TT3 Neo, the next generation of BLOCK TT3 transformers, guarantees safe isolation in high power ranges from 10 to 630 kVA.



TT3 NEO: 高效

TT3 NEO: HIGHLY EFFICIENT



TT3 Neo BLOCK产品侧重基本性能、铁芯和绕组的先进研发。BLOCK研发中进行的模拟与测试在优化变压器结构中起到了举足轻重的作用。由于创新的绕组结构，在操作过程中产生的任何热量都可以不断散发到周围空气中。公司内部的深入测试证实了带有高效性能的TT3 Neo优化的冷却性能。

With the TT3 Neo BLOCK has focused on the advanced development of the elementary properties, the core and the winding. Simulations and measurements performed by BLOCK development, played a key role in optimizing the transformer design. Any heat which occurs during operation is consistently dispersed into the ambient air, thanks to the innovative winding architecture. In-depth in-house tests verify the optimized cooling of the TT3 Neo to insure highly efficient properties.

切合用户要求

USE WITH YOUR IN LINE REQUIREMENTS

TT3 Neo的标准功率范围可达到10到630KVA，输入和输出电压可达600V。TT3 Neo的绕组间互联可使用Dyn5的接线方式。方便连接有助于直接安装在电气系统中。如果需要，可以购买已安装在合适外壳中的变压器，电压最高可达1KV。如需更多信息，请联系我们。

The TT3 Neo can be purchased with a standard power range of 10 to 630 kVA at an input and output voltage of up to 600 V. The TT3 Neo windings are interconnected and are available in the Dyn5 vector group. Easily accessible connections enable straightforward installation in electrical systems. If needed, the transformer can be purchased already mounted in a suitable housing and voltages up to 1KV are available. Please contact us for further information.

特点 HIGHLIGHTS

功率范围: 10 - 630 KVA
POWER RANGE: 10 TO 630 KVA

优化冷却
OPTIMIZED COOLING

低耗铁芯结构
LOW-LOSS CORE SHAPES

高效
HIGHLY EFFICIENT

技术参数 TECHNICAL DATA

	额定输入电压 (Vac) Rated input voltage (Vac)	额定输出电压 (Vac) Rated output voltage (Vac)	频率范围 (Hz) Frequency range (Hz)	额定功率 (kVA) Rated power (kVA)	输出额定电流 (A) Output rated current (A)	环境温度 Ambient temperature	螺钉端子 Screw-type terminal	安装位置 Mounting position	重量 (kg) Weight (kg)
TT3-A010-4040-0	3 x 400	3 x 400	50 - 60	10	3 x 14,4	40 °C	输入 10 mm ² , 输出 4 mm ² Input 10 mm ² , output 4 mm ²	仅用于垂 直安装 Only for upright installation	74
TT3-A016-4040-0				16	3 x 23,1		10 mm ²		119
TT3-A020-4040-0				20	3 x 28,9		10 mm ²		122
TT3-A025-4040-0				25	3 x 36,1		10 mm ²		154
TT3-A030-4040-0				30	3 x 43,3		10 mm ²		160
TT3-A040-4040-0				40	3 x 57,7		16 mm ²		161
TT3-A050-4040-0				50	3 x 72,1		35 mm ²		192
TT3-A063-4040-0				63	3 x 90,9		35 mm ²		267
TT3-A080-4040-0				80	3 x 115		35 mm ²		300
TT3-A100-4040-0				100	3 x 144		50 mm ²		359
TT3-A125-4040-0				125	3 x 180		70 mm ²		410
TT3-A160-4040-0				160	3 x 231		150 mm ²		455
TT3-A200-4040-0				200	3 x 289		240 mm ²		541
TT3-A250-4040-0				250	3 x 361		Ø 11 mm 母线安装孔 Ø 11 mm busbar hole		710
TT3-A315-4040-0				315	3 x 455		Ø 11 mm 母线安装孔 Ø 11 mm busbar hole		825
TT3-A400-4040-0				400	3 x 577		Ø 11 mm 母线安装孔 Ø 11 mm busbar hole		1068
TT3-A500-4040-0				500	3 x 722		Ø 13 mm 母线安装孔 Ø 13 mm busbar hole		1353
TT3-A630-4040-0				630	3 x 909		2 x Ø 13 mm 母线安装孔 2 x Ø 13 mm busbar hole		1616

如果需要, 电压最高可达1KV。
If needed, voltages up to 1KV are available.

标准
STANDARDS



IEC 61558-2-4, GB 19212.5

批准
APPROVALS



如有变更, 恕不另行通知
Subject to change

全球化的公司

A GLOBAL COMPANY



- 总部和生产基地 Headquarter and production sites
- 生产基地 Production sites
- 子公司 Subsidiaries
- 全球代理 International agencies



工厂1, 德国



工厂2, 德国



工厂3, 美国

博力科电气贸易（上海）有限公司
BLOCK Electronics Trading (Shanghai) Co., Ltd.
Room 224, Building 8, No. 2-42, Lane 433, Yuyuan Road,
Jing'an District Shanghai, 200040 • P.R. China
电话 +86 21 62372310 • 传真 +86 21 52300176
info@block-china.cn • www.block-china.cn