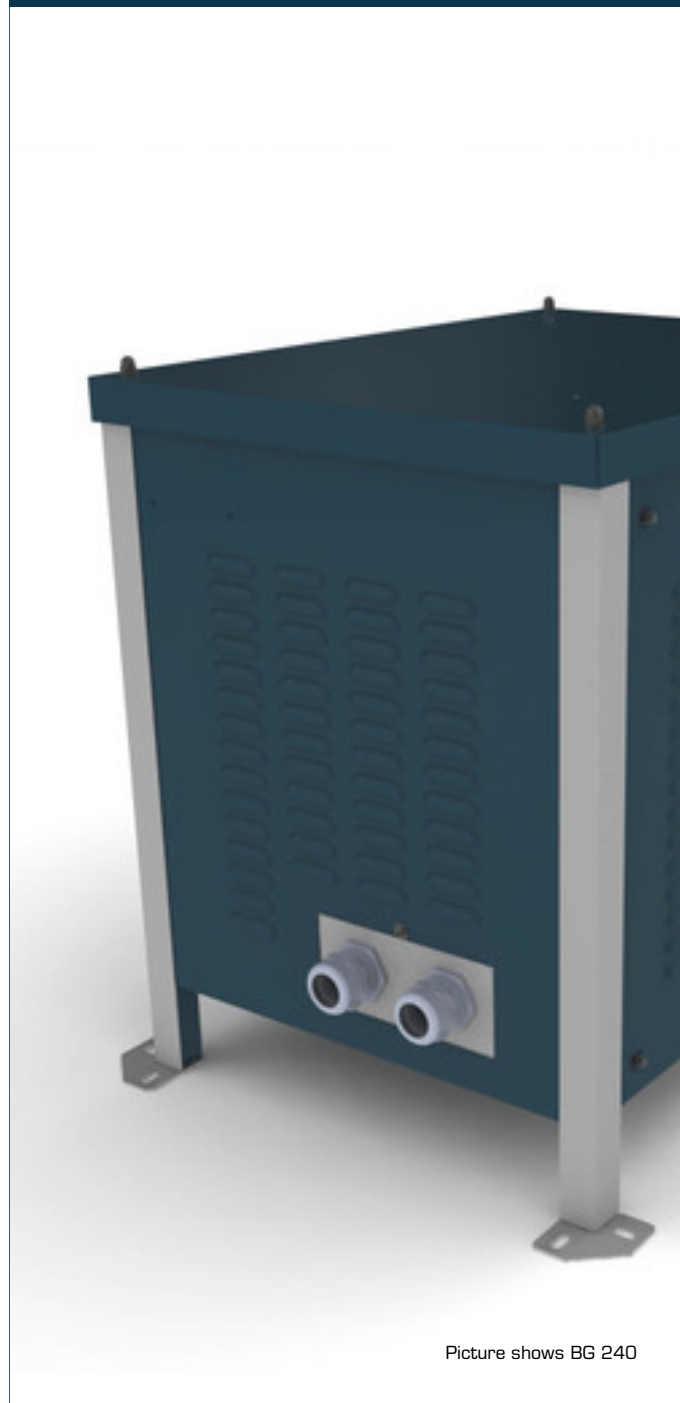


Metal enclosures **BG 450**



Picture shows BG 240

Advantages

Excellent corrosion protection and high abrasion resistance through powder-coated surface RAL 5008/9006

With cooling fins for optimal heat extraction

Optionally available in degree of protection IP 54

Applications

Universal metal enclosure for degree of protection IP23

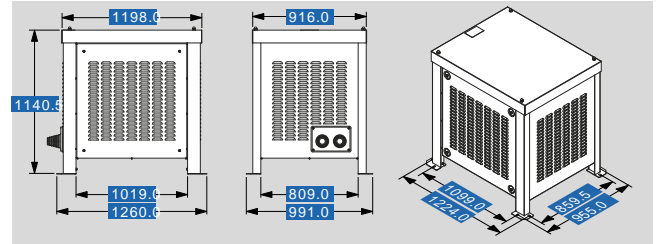
Approvals



Metal enclosures BG 450

Type		BG 450
Electrical data	Operating data	
	Enclosure suitable for protection index	IP 23
	Max. Power loss (at 40 °C ambient temperature)	2500 W
	For power (single-phase)*	100,000 VA
	For power (three-phase)*	150,000 VA
Notes	The indicated power is a guideline. Deviations may occur depending on the version of the transformer.	
*		
Order numbers		
Order Number		BG 450

Type		BG 450
Mechanical data	Terminal and mounting	
	Cable glanding type	2 Universal entries
	Cable glanding Ø	30 - 66 mm
	Measures and weights	
	Effective inside dimension (W)	1170 mm
	Effective inside dimension (H)	980 mm
	Effective inside dimension (D)	850 mm
	Fixing hole Ø	11 x 22 mm
	Weight	160 kg



Subject to change.